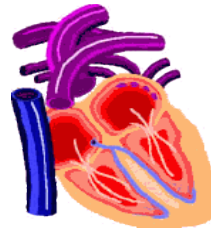


## CPR for Your Dog

CPR for your dog can mean the difference between life and death. This technique may enable a critically-injured dog to survive until you get it to the vet.

CPR is used to revive a dog that is not breathing and has no heartbeat (e.g. drowning, severe electrical shock). When needed it must be performed immediately and you must be able to assess the need quickly.

*CPR is a technique of last resort when the dog shows no signs of life. Any sign of breathing do not perform CPR.*



## Instructions



Lay the dog on its side ( and keep it there the entire time you do CPR).



Check for breathing by watching the dog's chest rise and fall. *If the dog is breathing proceed no further. Don't use CPR.*



If the dog is not breathing:



Establish an airway by removing any debris from the dog's mouth or by moving the tongue from the back of the throat. Check for breathing by watching the dog's chest. If the dog is breathing, stop, and don't use CPR.





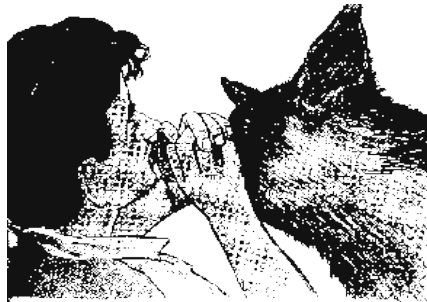
Check for pulse by placing a hand over the dog's chest just behind the shoulder blade to feel the heartbeat or by placing a hand in the groin area to the femoral pulse.



## If the dog is still not breathing



Cup your hands over the dog's nose and mouth to form a seal. Deliver 1 breath into the pet every 2 seconds. If the seal is proper, you should observe the dog's chest rise and fall.



If after you have delivered 5 breaths the dog does not show signs of breathing on its own or signs of consciousness, and there is no heartbeat, then have a helper place an hand just behind the dog's shoulder blades and apply gentle but firm compressions downward (*compressing 1/2 inch to 1 inch for a small dog up to as much as 2 inches for a large dog*) at a rate of 1 compression every 2 seconds.



If a helper is not available, alternate delivering the 2 breaths then 10 compressions.



Do not do compressions if there is a pulse no matter how faint.



Check for pulse and breathing every 2 minutes. If there is no pulse and breathing, continue for up to 10 minutes before giving up.

## Emergency Situations Where CPR Applies

 Heart Disease

 Seizures

 Trauma

 Lung Disease

 Heat Stroke

 Shock

 Poisonings



Take the dog to the Emergency Clinic as quickly as possible

